

How to Close the Cap of a Helium Container

Please set the cap of the helium container correctly.

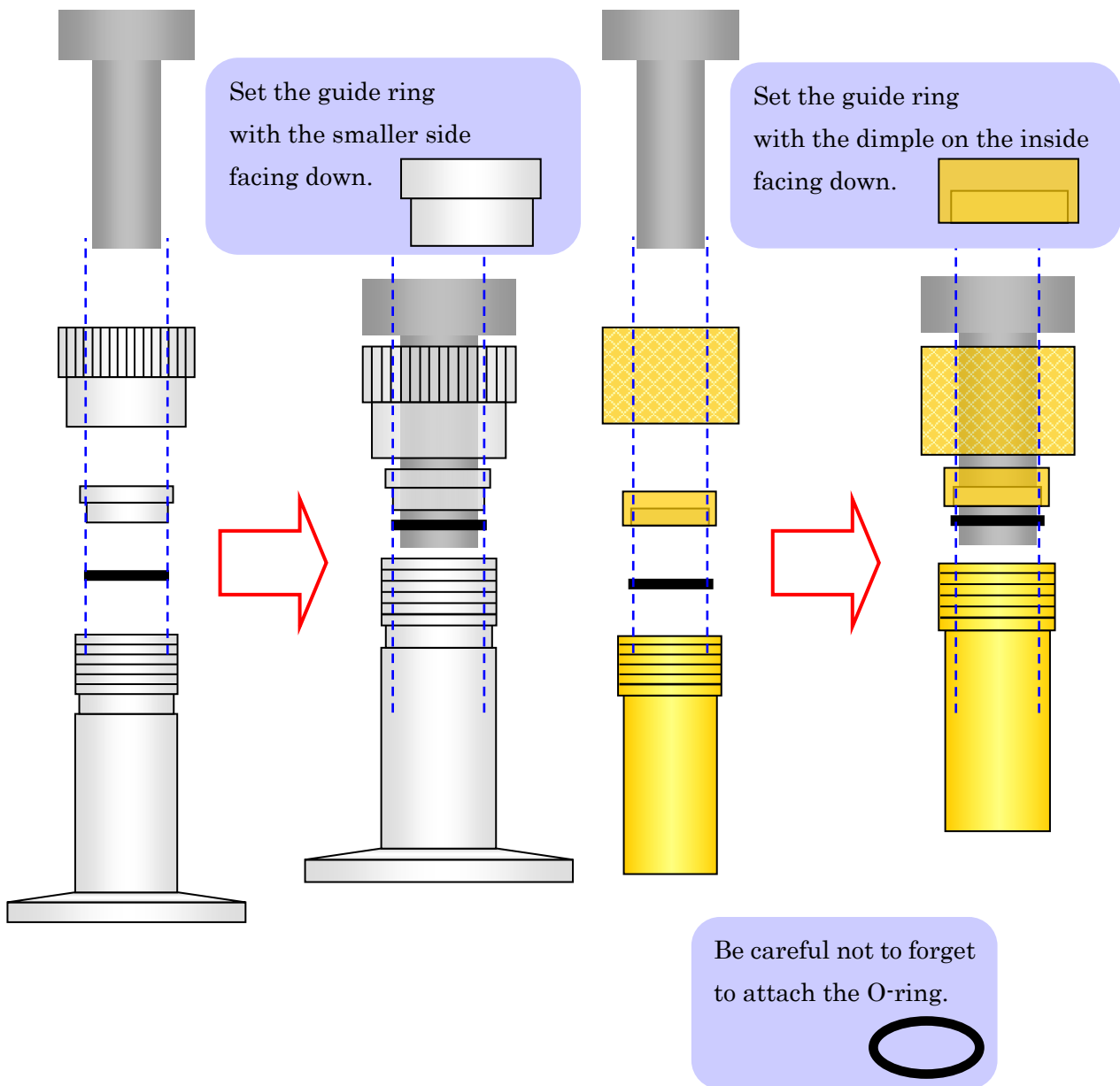
- When setting the cap, the order of the O-ring and guide ring and the direction of the guide ring are important. If you forget to put the O-ring on, or if you put the guide ring in upside down, it will not be able to seal properly.

If the helium container cannot be sealed, helium may leak out during transfer or outside air may flow back in, so be very careful.

(If outside air flows back into the vessel, a blockage due to solidification will occur inside the vessel, causing the pressure inside the vessel to rise and resulting in a dangerous situation.)

Schematic

- Two typical types are described below.



- When using a reducing adapter

